



Modal Psalm Tones I

Vocal

Chant Notation



Saint Meinrad

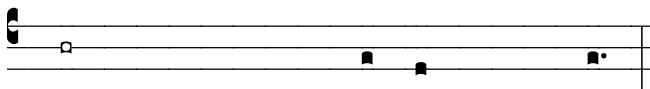
Liturgical Music

ST. MEINRAD PSALM TONES

based on the Eight Gregorian Modes

The music for each verse of the psalm consists of the reciting tone, one or two preparatory notes, and the dotted note that corresponds to the final accent of the verse.

Reciting Tone Preparatory notes Final Accent



Sing a new song to the Lord

When singing these psalm tones, it is important to **avoid treating every syllable as if they were of equal importance.** Rather, it is essential to maintain the flow and rhythm of natural speech.

The first line of each pair of melodies is for 2 to 4 line stanzas. For 2-line stanzas, use the first and last sections of the 4-line tone. 3-line stanzas use the first, second and last sections of the 4-line tone. The second line is for 5 or 6 line stanzas. For 5-line stanzas drop the section marked “5 line omit”.

1

Musical notation for voice part 1, measures 1-4. The notation is on a single staff with a C-clef. It consists of four measures of music with various note values and rests.

1

Musical notation for voice part 1, measures 1-4. The notation is on a single staff with a C-clef. It consists of four measures of music. A bracket labeled "5 line omit" is placed over the final measure, indicating that the fifth line of the staff is to be omitted.

© Saint Meinrad Archabbey

2

Musical notation for voice part 2, measures 1-4. The notation is on a single staff with a C-clef. It consists of four measures of music with various note values and rests.

2

Musical notation for voice part 2, measures 1-4. The notation is on a single staff with a C-clef. It consists of four measures of music. A bracket labeled "5 line omit" is placed over the final measure, indicating that the fifth line of the staff is to be omitted.

© Saint Meinrad Archabbey

3

Musical notation for voice part 3, measures 1-4. The notation is on a single staff with a C-clef. It consists of four measures of music with various note values and rests.

3

Musical notation for voice part 3, measures 1-4. The notation is on a single staff with a C-clef. It consists of four measures of music. A bracket labeled "5 line omit" is placed over the final measure, indicating that the fifth line of the staff is to be omitted.

© Saint Meinrad Archabbey

4

Musical notation for voice part 4, measures 1-4. The notation is on a single staff with a C-clef. It consists of four measures of music with various note values and rests.

4

Musical notation for voice part 4, measures 1-4. The notation is on a single staff with a C-clef. It consists of four measures of music. A bracket labeled "5 line omit" is placed over the final measure, indicating that the fifth line of the staff is to be omitted.

© Saint Meinrad Archabbey

Modal Psalm Tones, 3rd Edition.

Copyright © 1971, 1991 Saint Meinrad Archabbey, Inc.
All Rights Reserved



Saint Meinrad
Liturgical Music

Saint Meinrad Archabbey
100 Hill Drive

Saint Meinrad, IN 47577-1010

Fax: 812-357-6837

www.saintmeinradmusic.org

info@saintmeinradmusic.org